



DESIGN-IN WITH WINBOND W39V040FB/W39V080FA(FWH) PRODUCT

Table of Contents-

1.	GENERAL DESCRIPTION	2
2.	DETAIL DESCRIPTION	2
2.1	Function	2
2.2	Command	3
2.3	Pin Assignment	3
2.3.1	In Programmer Mode.....	3
2.3.2	In FWH Mode	4
2.4	Reminder for End-check of Sector Erase Operation	4
2.5	Toggle Bit Algorithm for Sector Erase Only.....	5
3.	CONCLUSION	6
4.	VERSION HISTORY	6

DESIGN-IN WITH WINBOND

W39V040FB/W39V080FA(FWH) PRODUCT



1. GENERAL DESCRIPTION

W39V040FB/W39V080FA FWH flash are application-specific devices which are used for Intel Chipset solution. There are three major parts listed in this comparison notice to identify the difference among Winbond 4M/8M FWH and the equivalent parts of SST and STM.

2. DETAIL DESCRIPTION

The comparison on Function, Command, and Pin Assignment in Programmer Mode and FWH mode is described in the following:

2.1 Function

4M/8M FWH Flash Compare Table

FUNCTION COMPARISON	WINBOND W39V040FB W39V080FA	SST W49LF004B W49LF008A	STM M50FLW040A/B M50FLW080A/B
Sector Definition	64K x 8	Diversified 4K/64K	64K x 8
Command Sets	AMD-LIKE command	AMD-LIKE command	INTEL-LIKE command
LPC BUS(FWH) Interface Mode	FWH	FWH	FWH
Programmer Interface Mode	Yes	Yes	Yes
Random Number Generator	No	No	No
Internal Boot Block Lockout	Yes	Yes	Yes
External H/W Protect Pins	Yes	Yes	Yes
Chip Erase	No	Yes	No
R/W Lock Registers	Yes	Yes	Yes
Multiple Device Selection	Yes	Yes	Yes
Device ID Register	Yes	Yes	Yes
Vpp For Fast Programming	Yes	No	Yes
Erase/Program Suspend	No	No	Yes
General Purpose Inputs Register	Yes	Yes	Yes

DESIGN-IN WITH WINBOND

W39V040FB/W39V080FA(FWH) PRODUCT



2.2 Command

Please note that the STM M50FLW040 /M50FLW080 belong to its respective command system and it is different from Winbond and SST command system. Therefore, the following table is based on each vendor defined command definitions.

FUNCTION COMPARISON	WINBOND W39V040FB W39V080FA	SST 49LF004B 49LF008A	STM M50FLW040A/B M50FLW080A/B
Byte Program	A0H	A0H	40H or 10H
Sector Erase (SST Block)	30H	50H	D0H
Product ID Entry	90H	90H	90H
Product ID Exit	F0H	F0H	FFH
Block Erase/Program Suspend	-----	-----	B0H
Block Erase/Program Resume	-----	-----	D0H

2.3 Pin Assignment

The W39V040FB and W39V080FA are used for specific PC (NB) system with Intel chipset solution. Its pin assignment is arranged to be easily adapt to each Intel system. Therefore, all minor differences between Winbond and other vendors can be ignored.

2.3.1 In Programmer Mode

Table 1. 32L-PLCC Pin Assignment in Programmer Mode

SST 49LF004B 49LF008A	STM M50FLW040 M50FLW080	WINBOND W39V040FB W39V080FA	PIN ASSIGNMENT IN PROGRAMMER MODE	WINBOND W39V040FB W39V080FA	STM M50FLW040 M50FLW080	SST 49LF004B 49LF008A
---	VPP	Vpp	1	32	VDD	VDD
RESET#	RESET#	RESET#	2	31	R/C#	R/C#
A9	A9	A9	3	30	A10	A10
A8	A8	A8	4	29	IC	IC
A7	A7	A7	5	28	GND	GND
A6	A6	A6	6	27	---	---
A5	A5	A5	7	26	---	GND
A4	A4	A4	8	25	VDD	VDD
A3	A3	A3	9	24	OE#	OE#
A2	A2	A2	10	23	WE#	WE#
A1	A1	A1	11	22	RY/BY#	RY/BY#
A0	A0	A0	12	21	DQ7	DQ7
DQ0	DQ0	DQ0	13	20	DQ6	DQ6
DQ1	DQ1	DQ1	14	19	DQ5	DQ5
DQ2	DQ2	DQ2	15	18	DQ4	DQ4
GND	GND	GND	16	17	DQ3	DQ3

Note: (---: NC)

DESIGN-IN WITH WINBOND

W39V040FB/W39V080FA(FWH) PRODUCT



2.3.2 In FWH Mode

Table 2. 32L-PLCC Pin Assignment in FWH Mode

SST 49LF004B 49LF008A	STM M50FLW040 M50FLW080	WINBOND W39V040FB W39V080FA	PIN ASSIGNMENT IN FWH MODE	WINBOND W39V040FB W39V080FA	STM M50FLW040 M50FLW080	SST 49LF004B 49LF008A
---	VPP	VPP	1	32	VDD	VDD
RESET#	RESET#	RESET#	2	31	CLK	CLK
FGPI3	FGPI3	FGPI3	3	30	FPGI4	FPGI4
FGPI2	FGPI2	FGPI2	4	29	IC	IC
FGPI1	FGPI1	FGPI1	5	28	GND	GND
FGPI0	FGPI0	FGPI0	6	27	---	---
WP#	WP#	WP#	7	WINBOND 26	---	GND
TBL#	TBL#	TBL#	8	32-LEAD PLCC 25	VDD	VDD
ID3	ID3	ID3	9	STANDARD 24	INIT#	INIT#
ID2	ID2	ID2	10	PINOUT 23	FWH4	FWH4
ID1	ID1	ID1	11	22	---	---
ID0	ID0	ID0	12	21	---	---
FWH0	FWH0	FWH0	13	20	---	---
FWH1	FWH1	FWH1	14	19	---	---
FWH2	FWH2	FWH2	15	18	---	---
GND	GND	GND	16	17	FWH3	FWH3

Note: Different pin assignment has been highlighted in bold font. (---: NC)

2.4 Reminder for End-check of Sector Erase Operation

System designer can use DQ6(Toggle Bit) or DQ7(Data Polling bit) to determine whether a erase operation is complete or in progress.

While doing end-check of sector erase, please note the following:

The minimum interval between toggling-check (or polling-check) should be more than 50ms. Only sector erase needs such special care and this rule is suitable for both W39V040FB and W39V080FA.

DESIGN-IN WITH WINBOND W39V040FB/W39V080FA(FWH) PRODUCT



2.5 Toggle Bit Algorithm for Sector Erase Only

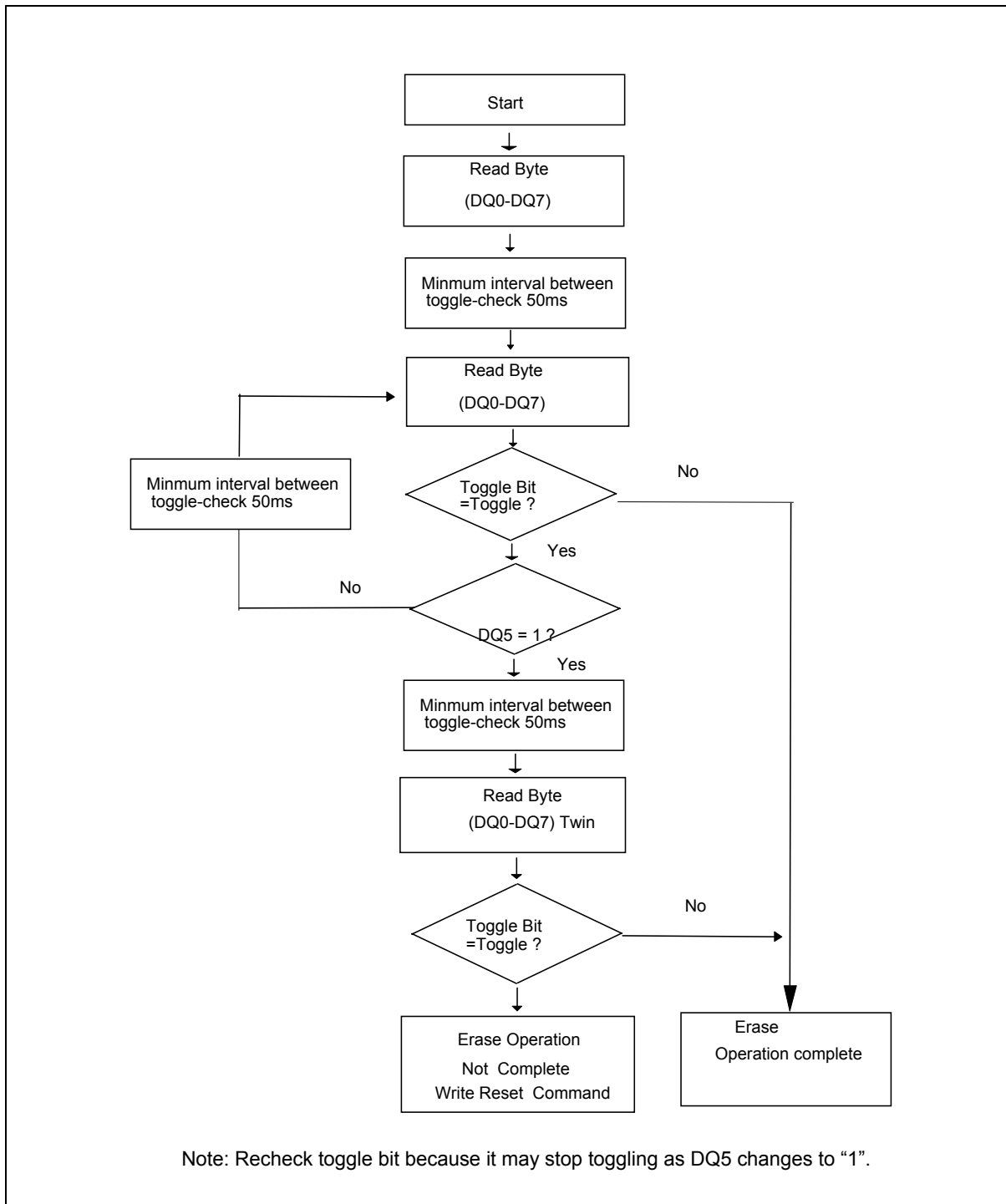


Figure1

DESIGN-IN WITH WINBOND W39V040FB/W39V080FA(FWH) PRODUCT



3. CONCLUSION

The W39V040FB and W39V080FA are already well supported by all famous third parties like BIOS vendors AMI, Award/Phoenix, and Programmer vendors (please refer to our support list.) They have made efforts to cover the differences on device's command sets and programming algorithm. Therefore, it is compatible for users to directly use it in their system.

4. VERSION HISTORY

VERSION	DATE	PAGE	DESCRIPTION
A1	Nov. 26, 2004	-	Initial Issued



Headquarters

No. 4, Creation Rd. III,
Science-Based Industrial Park,
Hsinchu, Taiwan
TEL: 886-3-5770066
FAX: 886-3-5665577
<http://www.winbond.com.tw/>

Taipei Office

9F, No.480, Rueiguang Rd.,
Neihu District, Taipei, 114,
Taiwan, R.O.C.
TEL: 886-2-8177-7168
FAX: 886-2-8751-3579

Winbond Electronics Corporation America

2727 North First Street, San Jose,
CA 95134, U.S.A.
TEL: 1-408-9436666
FAX: 1-408-5441798

Winbond Electronics Corporation Japan

7F Daini-ueno BLDG, 3-7-18
Shinyokohama Kohoku-ku,
Yokohama, 222-0033
TEL: 81-45-4781881
FAX: 81-45-4781800

Winbond Electronics (Shanghai) Ltd.

27F, 2299 Yan An W. Rd. Shanghai,
200336 China
TEL: 86-21-62365999
FAX: 86-21-62365998

Winbond Electronics (H.K.) Ltd.

Unit 9-15, 22F, Millennium City,
No. 378 Kwun Tong Rd.,
Kowloon, Hong Kong
TEL: 852-27513100
FAX: 852-27552064

*Please note that all data and specifications are subject to change without notice.
All the trade marks of products and companies mentioned in this data sheet belong to their respective owners.*