



ISD1200 SERIES

**SINGLE-CHIP,
VOICE RECORD/PLAYBACK DEVICES
10- AND 12-SECOND DURATION**



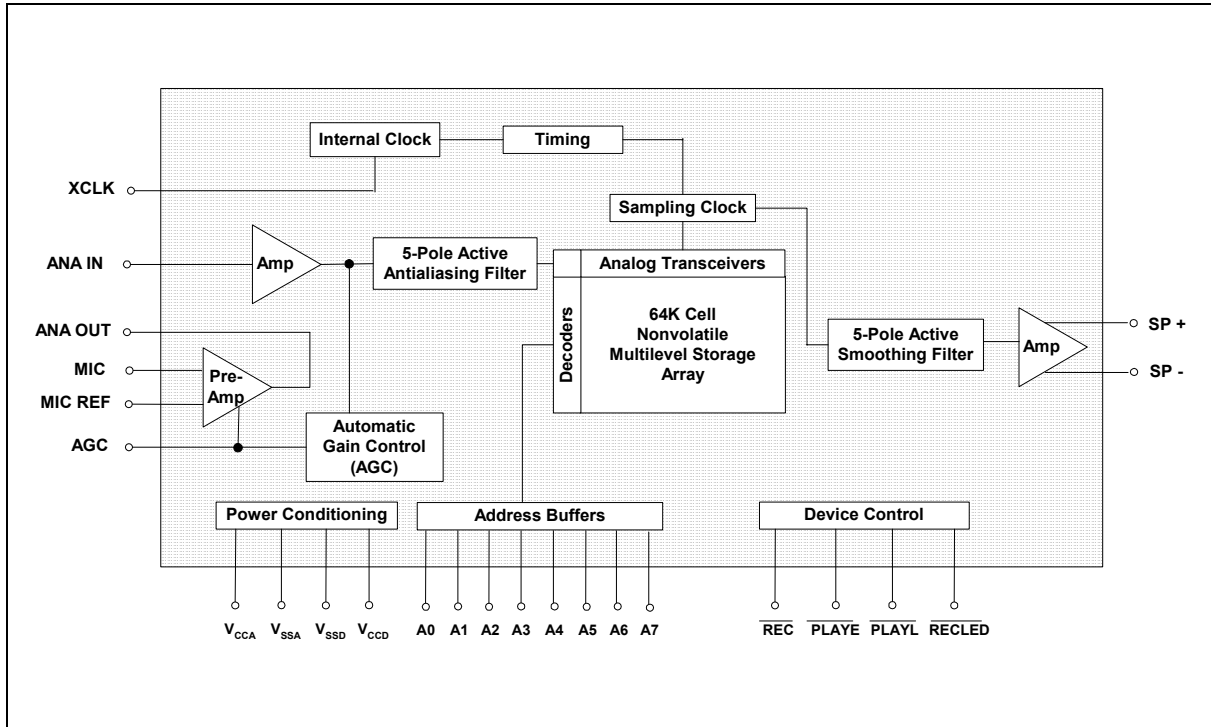
1. GENERAL DESCRIPTION

Winbond's ChipCorder[®] ISD1200 series provide high-quality, single-chip, Record/Playback solutions to 10- and 12-second messaging applications. The CMOS devices include an on-chip oscillator, microphone preamplifier, automatic gain control, antialiasing filter, smoothing filter, and speaker amplifier. A minimum Record/Playback subsystem can be configured with a microphone, a speaker, several passive components, two push buttons, and a power source. Recordings are stored into on-chip nonvolatile memory cells, providing zero-power message storage. This unique, single-chip solution is made possible through Winbond's patented Multi-Level Storage (MLS) technology. Voice and audio signals are stored directly into memory in their natural form, providing high-quality, solid-state voice reproduction.

2. FEATURES

- Single +5 volt power supply
- Single-chip with 10 and 12 seconds duration
- Easy-to-use single-chip, voice record/playback solution
- Push-button interface
 - Playback can be edge- or level activated
- Fully addressable to handle multiple messages
- Automatic power-down mode
 - Enters standby automatically following a record or playback cycle
 - Standby current 0.5 μ A (typical)
- Zero-power message storage
 - Eliminates battery backup circuits
- High-quality, natural voice/audio reproduction
- On-chip oscillator
- No programmer or development system needed
- 100,000 record cycles (typical)
- 100-year message retention (typical)
- Available in die, PDIP, and SOIC
- Temperature: Commercial - Packaged unit : 0°C to 70°C, Die : 0°C to 50°C

3. BLOCK DIAGRAM





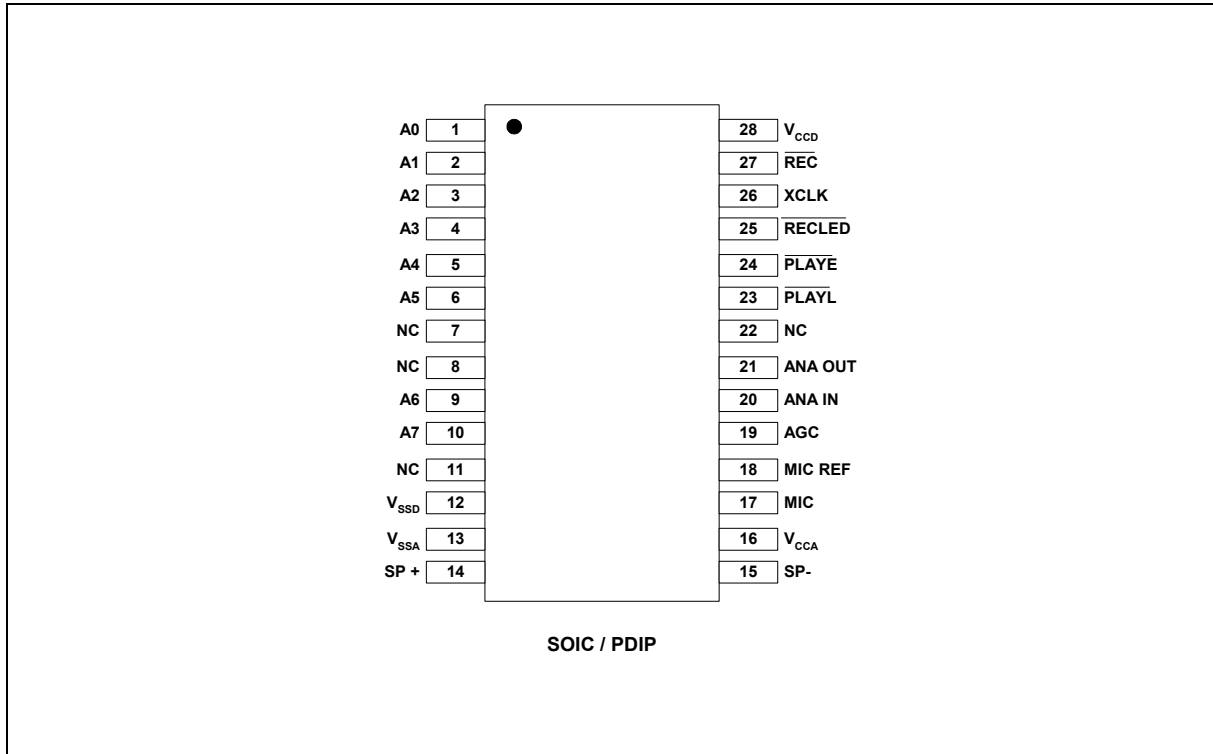
4. TABLE OF CONTENTS

| | |
|--|----|
| 1. GENERAL DESCRIPTION..... | 2 |
| 2. FEATURES | 2 |
| 3. BLOCK DIAGRAM | 3 |
| 4. TABLE OF CONTENTS | 4 |
| 5. PIN CONFIGURATION | 5 |
| 6. PIN DESCRIPTION | 6 |
| 7. FUNCTIONAL DESCRIPTION..... | 10 |
| 7.1. Detailed Description..... | 10 |
| 7.2. Operational Modes | 11 |
| 7.2.1. Operational Modes Description..... | 12 |
| 8. TIMING DIAGRAMS..... | 13 |
| 9. ABSOLUTE MAXIMUM RATINGS..... | 14 |
| 9.1 Operating Conditions | 15 |
| 10. ELECTRICAL CHARACTERISTICS | 16 |
| 10.1. Parameters For Packaged Parts | 16 |
| 10.1.1. Typical Parameter Variation with Voltage and Temperature | 19 |
| 10.2. Parameters For DIE..... | 20 |
| 10.2.1. Typical Parameter Variation with Voltage and Temperature | 23 |
| 11. TYPICAL APPLICATION CIRCUIT | 24 |
| 12. PACKAGE DRAWING AND DIMENSIONS | 27 |
| 12.1. 28-Lead 300mil Plastic Small Outline IC (SOIC)..... | 27 |
| 12.2. 28-Lead 600mil Plastic Dual Inline Package (PDIP)..... | 28 |
| 12.3. Die Physical Layout ^[1] | 29 |
| 13. ORDERING INFORMATION..... | 31 |
| 14. VERSION HISTORY | 32 |

ISD1200 SERIES



5. PIN CONFIGURATION



Note: NC means must No connect



6. PIN DESCRIPTION

| PIN NAME | PIN NO. | FUNCTION |
|-------------------------------------|------------|--|
| A0-A7 | 1-6, 9, 10 | <p>Address Inputs: The address inputs have two functions, depending on the level of the two Most Significant Bits (MSB) of the address (A6 and A7).</p> <p>If either or both of the two MSBs are LOW, all inputs are interpreted as address bits and are used as the start address for the current record or playback cycle. The address pins are inputs only and do not output internal address information as the operation progresses. Address inputs are latched by the falling edge of $\overline{\text{PLAYE}}$, $\overline{\text{PLAYL}}$, or $\overline{\text{REC}}$.</p> <p>If both A6 & A7 are HIGH, then the device is in special operational modes. Please refer to operational modes section for details.</p> |
| V_{SSA} , V_{SSD} | 12, 13 | <p>Ground: Similar to V_{CCA} and V_{CCD}, separate analog and digital ground rails provide independent analog and digital ground buses internally to minimize noise. These pins should be tied together as close as possible to the device.</p> |
| SP+, SP- | 14, 15 | <p>Speaker Outputs: The differential SP+ and SP- pins are designed to drive a 16Ω speaker and no coupling capacitor is required. Conversely, with single-ended connection, a coupling capacitor is needed between the SP pin and the speaker. Besides, the output power is about a quarter of that from differential output. The speaker outputs are in high-impedance state during recording and at V_{SSA} during power down.</p> |
| V_{CCA} , V_{CCD} | 16, 28 | <p>Supply Voltages: Separate analog and digital power rails provide power to internal analog and digital circuits respectively to minimize internal noises. These power buses are brought out to separate pads and should be tied together as close to the supply source as possible. It is important that the power supplies are decoupled as close to the device as possible.</p> |
| MIC | 17 | <p>Microphone: The microphone input transfers its signal to the on-chip preamplifier. An on-chip Automatic Gain Control (AGC) circuit controls the gain of this preamplifier from -15 to 24dB. An external microphone should be AC coupled to this pin via a series capacitor. The capacitor value, together with the internal 10 KΩ resistance on this pin, determines the low-frequency cutoff for the device passband. See Winbond's Application Information for additional information on low-frequency cutoff calculation.</p> |

| PIN NAME | PIN NO. | FUNCTION |
|-------------------------------|---------|---|
| MIC REF | 18 | Microphone Reference: The MIC REF input is the inverting input to the microphone preamplifier. This provides a noise-canceling or common-mode rejection input to the device when connected to a differential microphone. |
| AGC | 19 | Automatic Gain Control (AGC): The AGC input dynamically adjusts the gain of the preamplifier to compensate for the wide range of microphone input levels. The AGC allows the full range of sound, from whispers to loud sounds, to be recorded with minimal distortion. The “attack” time is determined by the time constant of a 5 K Ω internal resistance and an external capacitor (C6 of Figure 5 in Section 11) connected from the AGC pin to V _{SSA} . The “release” time is determined by the time constant of an external resistor (R5) and an external capacitor (C6) connected in parallel between the AGC pin and V _{SSA} pin. Nominal values of 470 K Ω and 4.7 μ F give satisfactory results in most cases. Tying this to ground gives maximum gain, while tying it to V _{CCA} gives minimum gain for the AGC amplifier. |
| ANA IN | 20 | Analog Input: The ANA IN transfers an input signal to the chip for recording. For microphone usage, this ANA IN pin should be connected via an external capacitor to the ANA OUT pin. This capacitor value, together with the 3 K Ω input impedance of ANA IN, is selected to give additional cutoff at the low-frequency end of the voice passband. If the desired input is derived from a source other than a microphone, the signal can be capacitively coupled into the ANA IN pin directly. |
| ANA OUT | 21 | Analog Output: This pin provides the preamplifier output to the user. The voltage gain of the preamplifier is determined by the voltage level at the AGC pin. |
| $\overline{\text{PLAYL}}$ [2] | 23 | Playback, Level-Activated: When this input signal is held LOW, a playback cycle is initiated, and playback continues until $\overline{\text{PLAYL}}$ is pulled HIGH, or an EOM marker is detected. The device automatically powers down and enters into standby mode upon completion of a playback cycle. |
| $\overline{\text{PLAYE}}$ [2] | 24 | Playback, Edge-Activated: When a LOW-going transition is detected on this pin, a playback cycle begins. Taking $\overline{\text{PLAYE}}$ HIGH during a playback cycle will not terminate the current cycle. Playback continues until an EOM is encountered. Upon completion of a playback cycle, the device automatically powers down and enters into standby mode. |

ISD1200 SERIES



| PIN NAME | PIN NO. | FUNCTION | | | | | | | | | |
|-------------|-------------|--|-------------|-------------|----------------|---------|---------|-----------|---------|---------|-----------|
| RECLED | 25 | <p>Record LED: The RECLED output is LOW during a record cycle. It can be used to drive an LED to indicate a record cycle is in progress. In addition, RECLED pulses LOW momentarily when an end-of-message is encountered in a playback operation.</p> | | | | | | | | | |
| XCLK | 26 | <p>External Clock: The external clock input has an internal pull-down resistor. The ISD1100 is configured at the factory with an internal sampling clock frequency that guarantees its minimum nominal record/playback time. For instance, an ISD1110 operating within specification will be observed to always have a minimum of 10 seconds of recording time. The sampling frequency is then maintained to a variation of ± 2.25 percent over the commercial temperature and operating voltage ranges while still maintaining the minimum duration specified. As a result some devices will have a few percent more than nominal recording time. If greater precision is required, the device can be clocked through the XCLK pin as follows:</p> <p style="text-align: center;">EXTERNAL CLOCK SAMPLE RATES</p> <table border="1" style="margin-left: auto; margin-right: auto;"> <thead> <tr> <th>Part Number</th> <th>Sample Rate</th> <th>Required Clock</th> </tr> </thead> <tbody> <tr> <td>ISD1110</td> <td>6.4 kHz</td> <td>819.2 kHz</td> </tr> <tr> <td>ISD1112</td> <td>5.3 kHz</td> <td>682.7 kHz</td> </tr> </tbody> </table> <p>These recommended clock rates should not be varied because the anti-aliasing and smoothing filters are fixed, and aliasing problems can occur if the sample rate differs from the one recommended. The duty cycle on the input clock is not critical, as the clock is immediately divided by two. If the XCLK is not used, this pin must be grounded. Please see Application Information for the ISD1100 series for more details on external clocking.</p> | Part Number | Sample Rate | Required Clock | ISD1110 | 6.4 kHz | 819.2 kHz | ISD1112 | 5.3 kHz | 682.7 kHz |
| Part Number | Sample Rate | Required Clock | | | | | | | | | |
| ISD1110 | 6.4 kHz | 819.2 kHz | | | | | | | | | |
| ISD1112 | 5.3 kHz | 682.7 kHz | | | | | | | | | |

ISD1200 SERIES



| PIN NAME | PIN NO. | FUNCTION |
|--|---------|---|
| $\overline{\text{REC}}$ ^[1] | 27 | <p>Record: The $\overline{\text{REC}}$ input is an active-LOW signal. The device records whenever $\overline{\text{REC}}$ is LOW. This signal must remain LOW for the duration of the recording. A record cycle is completed when $\overline{\text{REC}}$ is pulled HIGH or the memory space is filled up.</p> <p>$\overline{\text{REC}}$ takes precedence over either playback ($\overline{\text{PLAYE}}$ or $\overline{\text{PLAYL}}$) signal. If $\overline{\text{REC}}$ is pulled LOW during a playback cycle, the playback immediately ceases and recording begins.</p> <p>An end-of-message (EOM) marker is internally recorded, enabling a subsequent playback cycle to terminate appropriately. The device automatically powers down into standby mode when $\overline{\text{REC}}$ goes HIGH.</p> |
| NC | 11 | NC: No connect |

Notes:

- ^[1] The $\overline{\text{REC}}$ signal is debounced for 50 ms on the rising edge to prevent a false retriggering from a push-button switch.
- ^[2] During playback, if either $\overline{\text{PLAYE}}$ or $\overline{\text{PLAYL}}$ is held LOW during EOM or OVF, the device will still enter into standby mode and the internal oscillator and timing generator will stop. However, the rising edge of $\overline{\text{PLAYE}}$ and $\overline{\text{PLAYL}}$ are not debounced and any subsequent falling edge (particularly switch bounce) present on the input pins will initiate another playback.



7. FUNCTIONAL DESCRIPTION

7.1. DETAILED DESCRIPTION

Speech/Sound Quality

Winbond's patented ChipCorder[®] technology provides natural audio record and playback. The ISD1200 series includes devices offered at 5.3 and 6.4 kHz sampling frequencies, allowing the user a choice of speech quality options. The input voice signals are stored directly in nonvolatile EEPROM cells and are reproduced without the synthetic effect often heard with digital solid-state speech solutions. A complete sample is stored in a single cell, minimizing the memory necessary to store a recording of a given duration.

Duration

To meet end system requirements, the ISD1200 series offers single-chip solutions at 10 and 12 seconds.

TABLE 1: ISD1200 SERIES SUMMARY

| Part Number | Duration (Seconds) | Input Sample Rate (kHz) | Typical Filter Pass Band* (kHz) |
|-------------|--------------------|-------------------------|---------------------------------|
| ISD1210 | 10 | 6.4 | 2.6 |
| ISD1212 | 12 | 5.3 | 2.2 |

* 3dB roll-off-point....

EEPROM Storage

One of the benefits of Winbond's ChipCorder[®] technology is the use of on-chip non-volatile memory, providing zero-power message storage. The message is retained for up to 100 years typically without power. In addition, the device can be re-recorded typically over 100,000 times.

Basic Operation

The ISD1200 ChipCorder[®] series devices are controlled by a single record signal, $\overline{\text{REC}}$, and either of two push-button control playback signals, $\overline{\text{PLAYE}}$ (edge-activated playback), and $\overline{\text{PLAYL}}$ (level-activated playback). The ISD1200 series parts are configured for simplicity of design in a single/multiple-message application. Using the address lines will allow multiple message applications.

Automatic Power-Down Mode

At the end of a playback or record cycle, the ISD1200 series devices automatically return to a low-power standby mode, consuming typically 0.5 μA . During a playback cycle, the device powers down automatically at the end of the message. During a record cycle, the device powers down immediately after $\overline{\text{REC}}$ is pulled HIGH.



Addressing

In addition to single message application, the ISD1200 series provides a full addressing capability.

The ISD1200 series storage array has 80 distinct addressable segments, providing the following resolutions per segment. See Application Information for ISD1200 address tables.

TABLE 2: DEVICE PLAYBACK/RECORD DURATIONS

| Part Number | Minimum Duration (Seconds) |
|-------------|----------------------------|
| ISD1210 | 125 ms |
| ISD1212 | 150 ms |

7.2. OPERATIONAL MODES

The ISD1200 series is designed with several built-in operational modes provided to allow maximum functionality with a minimum of additional components, described in details below. The operational modes use the address pins on the ISD1200 devices, but are mapped outside the valid address range. When the two Most Significant Bits (MSBs) are HIGH (A6 and A7), the remaining address signals are interpreted as mode bits and not as address bits. Therefore, operational modes and direct addressing are not compatible and cannot be used simultaneously.

There are two important considerations for using operational modes. Firstly, all operations begin initially at address 0, which is the beginning address of the ISD1200. Later operations can begin at the other address locations, depending on the operational mode(s) chosen. In addition, the address pointer is reset to 0 when the device is changed from record to playback but not from playback to record when A4 is HIGH in Operational Mode.

Secondly, an Operational Mode is executed when any of the control inputs, $\overline{\text{PLAYE}}$, $\overline{\text{PLAYL}}$, or $\overline{\text{REC}}$, go LOW and the two MSBs are HIGH. This Operational Modes remains in effect until the next LOW-going control input signal, at which point the current address/mode levels are sampled and executed.

Note: The two MSBs (A6 & A7) are pins 9 and 10 for ISD1200 series.



7.2.1. Operational Modes Description

The Operational Modes can be used in conjunction with a microcontroller, or they can be hardwired to provide the desired system operation.

A0 – Message Cueing

Message Cueing allows the user to skip through messages, without knowing the actual physical address of each message. Each control input LOW pulse causes the internal address pointer to skip to the next message. This mode should be used for playback only, and is typically used with A4 Operational Mode.

A1 – Delete EOM Markers

The A1 Operational Modes allows sequentially recorded message to be combined into a single message with only one EOM marker set at the end of the final message. When this operational mode is configured, messages recorded sequentially are played back as one continuous message.

A2 – Unused

A3 – Message Looping

The A3 Operational Mode allows for the automatic, continuously repeated playback of the message located at the beginning of the address space.

A Message can completely fill the ISD1200 device and will loop from beginning to end. Pulsing PLAYE will start the playback and pulsing PLAYL will end the playback.

A4 – Consecutive Addressing

During normal operations, the address pointer will reset when a message is played through to an EOM marker. The A4 Operational Mode inhibits the address pointer reset, allowing messages to be recorded or played back consecutively. When the device is in a static state; i.e., not recording or playing back, momentarily taking this pin LOW will reset the address counter to zero.

A5 – Unused

TABLE 3: OPERATIONAL MODES TABLE

| Address Ctrl. HIGH | Function | Typical Use | Jointly Compatible* |
|--------------------|------------------------|--|---------------------|
| A0 | Message cueing | Fast-forward through messages | A4 |
| A1 | Delete EOM markers | Position EOM marker at the end of the last message | A3, A4 |
| A2 | Unused | | |
| A3 | Looping | Continuous playback from Address 0 | A1 |
| A4 | Consecutive addressing | Record/play multiple consecutive messages | A0, A1 |
| A5 | Unused | | |

Note: An asterisk [*] Indicates additional operational modes that can be used simultaneously with the given mode.

8. TIMING DIAGRAMS

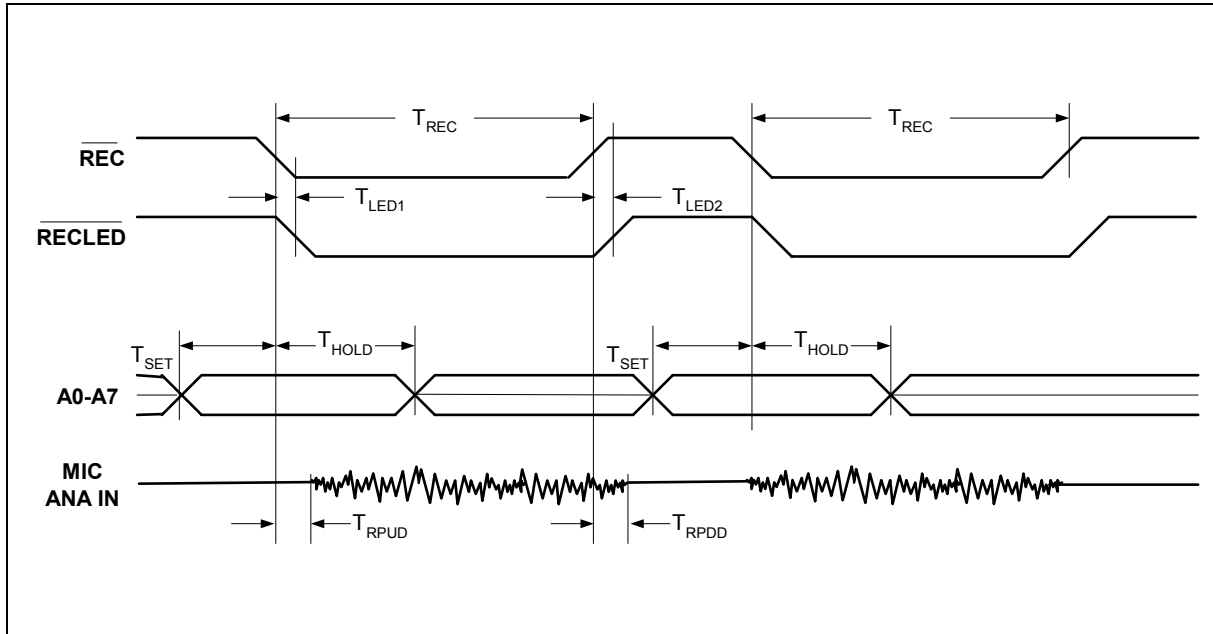
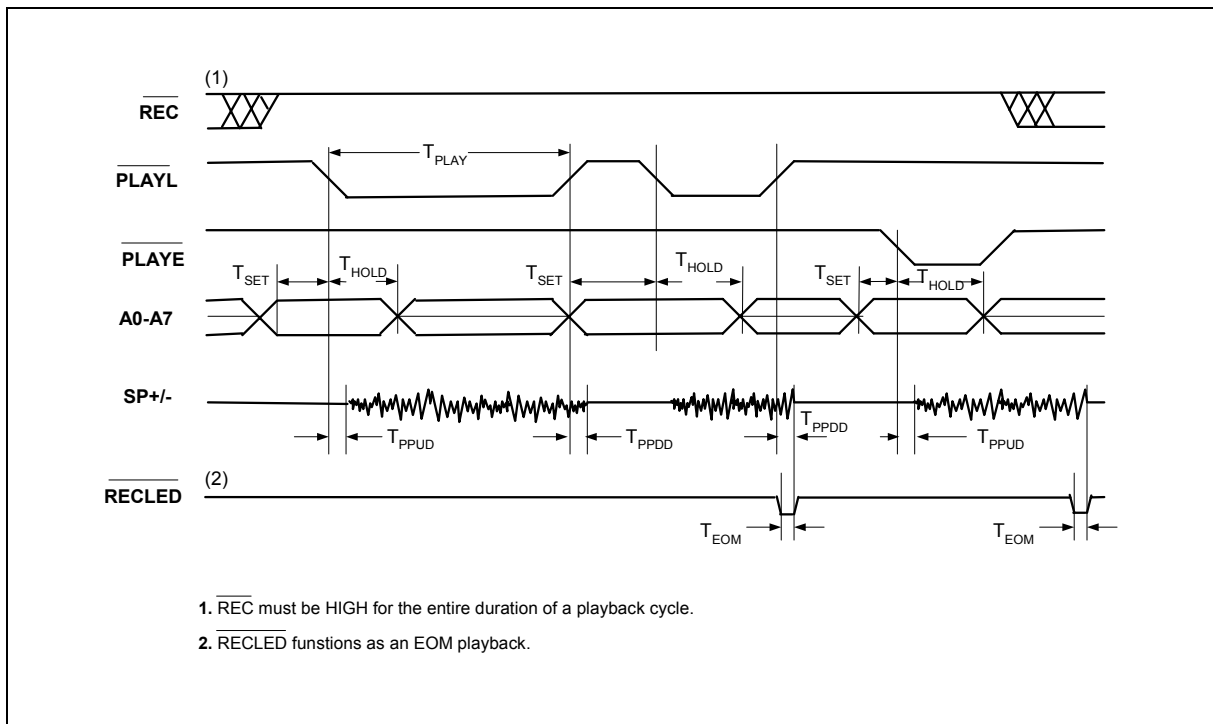


FIGURE 1: RECORD



1. \overline{REC} must be HIGH for the entire duration of a playback cycle.
2. \overline{RECLEd} functions as an EOM playback.

FIGURE 2: PLAYBACK



9. ABSOLUTE MAXIMUM RATINGS¹

TABLE 4: ABSOLUTE MAXIMUM RATINGS (DIE)

| CONDITIONS | VALUES |
|---|--|
| Junction temperature | 150°C |
| Storage temperature range | -65°C to +150°C |
| Voltage applied to any pin | (V _{SS} - 0.3V) to (V _{CC} + 0.3V) |
| Voltage applied to any pin (Input current limited to ±20mA) | (V _{SS} - 1.0V) to (V _{CC} + 1.0V) |
| V _{CC} - V _{SS} | -0.3V to +7.0V |

TABLE 5: ABSOLUTE MAXIMUM RATINGS (PACKAGED PARTS)

| CONDITIONS | VALUES |
|--|--|
| Junction temperature | 150°C |
| Storage temperature range | -65°C to +150°C |
| Voltage applied to any pin | (V _{SS} - 0.3V) to (V _{CC} + 0.3V) |
| Voltage applied to any pin (Input current limited to ±20 mA) | (V _{SS} - 1.0V) to (V _{CC} + 1.0V) |
| Lead temperature (Soldering - 10sec) | 300°C |
| V _{CC} - V _{SS} | -0.3V to +7.0V |

¹ Stresses above those listed may cause permanent damage to the device. Exposure to the absolute maximum ratings may affect device reliability and performance. Functional operation is not implied at these conditions.



9.1 OPERATING CONDITIONS

TABLE 6: OPERATING CONDITIONS (DIE)

| CONDITIONS | VALUES |
|--|----------------|
| Commercial operating temperature range | 0°C to +50°C |
| Supply voltage (V_{CC}) ^[1] | +4.5V to +6.5V |
| Ground voltage (V_{SS}) ^[2] | 0V |

TABLE 7: OPERATING CONDITIONS (PACKAGED PARTS)

| CONDITIONS | VALUES |
|---|----------------|
| Commercial operating temperature range (Case temperature) | 0°C to +70°C |
| Supply voltage (V_{CC}) ^[1] | +4.5V to +5.5V |
| Ground voltage (V_{SS}) ^[2] | 0V |

¹. $V_{CC} = V_{CCA} = V_{CCD}$

². $V_{SS} = V_{SSA} = V_{SSD}$



10. ELECTRICAL CHARACTERISTICS

10.1. PARAMETERS FOR PACKAGED PARTS

TABLE 8: DC PARAMETERS

| PARAMETERS | SYMBOLS | MIN ^[2] | TYP ^[1] | MAX ^[2] | UNITS | CONDITIONS |
|-------------------------------------|---------------------|--------------------|--------------------|--------------------|-------|---|
| Input Low Voltage | V _{IL} | | | 0.8 | V | |
| Input High Voltage | V _{IH} | 2.4 | | | V | |
| Output Low Voltage | V _{OL} | | | 0.4 | V | I _{OL} = 4.0 mA |
| Output High Voltage | V _{OH} | 2.4 | | | V | I _{OH} = -1.6 mA |
| V _{CC} Current (Operating) | I _{CC} | | 15 | 30 | mA | V _{CC} = 5.5V ^[3] , R _{EXT} = ∞ |
| V _{CC} Current (Standby) | I _{SB} | | 0.5 | 10 | μA | ^[3] ^[4] |
| Input Leakage Current | I _{IL} | | | ±1 | μA | |
| Input Current HIGH w/Pull Down | I _{ILPD} | | | 130 | μA | Force V _{CC} ^[5] |
| Output Load Impedance | R _{EXT} | 16 | | | Ω | Speaker Load |
| Preamp IN Input Resistance | R _{MIC} | | 10 | | KΩ | Pins 17, 18 |
| ANA IN Input Resistance | R _{ANA IN} | | 3 | | KΩ | |
| Preamp Gain 1 | A _{PRE1} | | 24 | | dB | AGC = 0.0V |
| Preamp Gain 2 | A _{PRE2} | | -45 | -15 | dB | AGC = 2.5V |
| ANA IN to SP+/- Gain | A _{ARP} | | 22 | | dB | |
| AGC Output Resistance | R _{AGC} | | 5 | | KΩ | |
| Preamp Out Source | I _{PREH} | | -2 | | MA | @ V _{OUT} = 1.0V |
| Preamp In Sink | I _{PREL} | | 0.5 | | MA | @ V _{OUT} = 2.0V |

[1] Typical values @ T_A = 25° and 5.0V.

[2] All Min/Max limits are guaranteed by Winbond via electrical testing or characterization. Not all specifications are 100 percent tested.

[3] V_{CCA} and V_{CCD} connected together.

[4] $\overline{\text{REC}}$, $\overline{\text{PLAYL}}$, and $\overline{\text{PLAYE}}$ must be at V_{CCD}.

[5] Pin 26.

TABLE 9: AC PARAMETERS

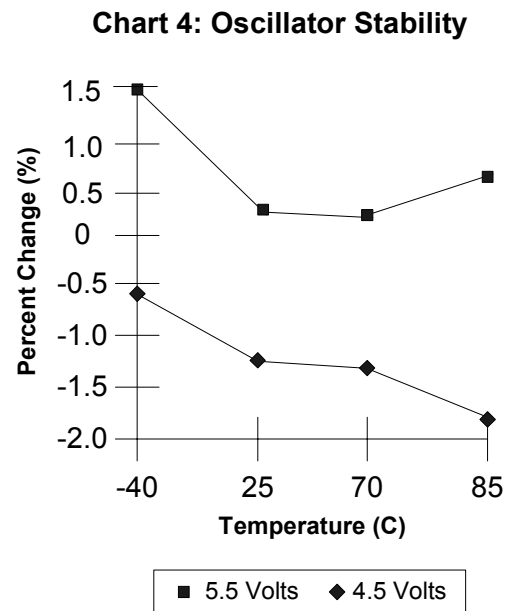
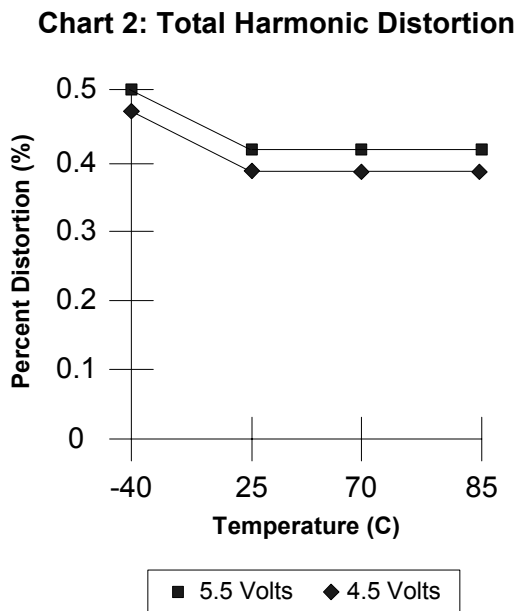
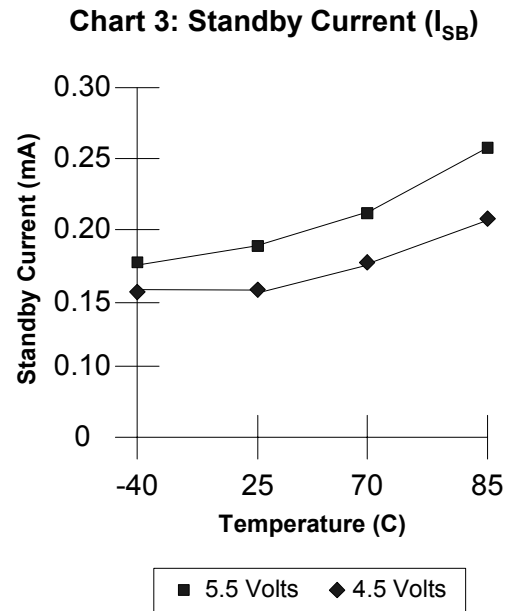
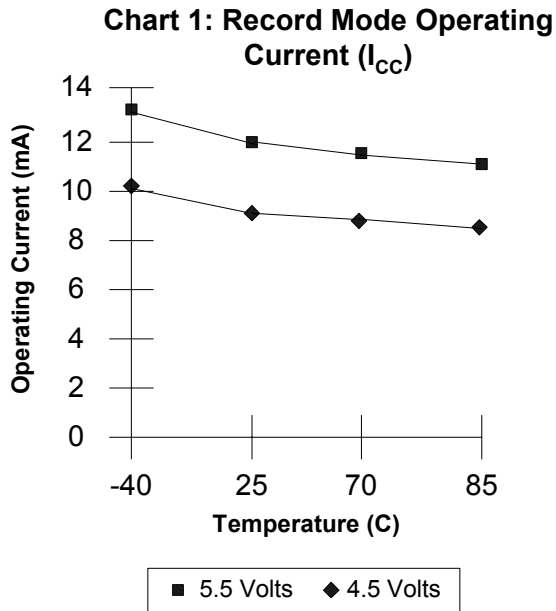
| CHARACTERISTICS | SYMBOLS | MIN ^[2] | TYP ^[1] | MAX ^[2] | UNITS | CONDITIONS |
|-------------------------------|------------|--------------------|--------------------|--------------------|-------|---------------------------------------|
| Sampling Frequency | F_S | | | | | |
| ISD1210 | | | | 6.4 | kHz | [5] |
| ISD1212 | | | | 5.3 | kHz | [5] |
| Filter Pass Band | F_{CF} | | | | | |
| ISD1210 | | | 2.6 | | kHz | 3 dB Roll-Off Point ^{[3][6]} |
| ISD1212 | | | 2.2 | | kHz | 3 dB Roll-Off Point ^{[3][6]} |
| Record Duration | T_{REC} | | | | | |
| ISD1210 | | 10 | | | sec | |
| ISD1212 | | 12 | | | sec | |
| Playback Duration | T_{PLAY} | | | | | |
| ISD1210 | | 10 | | | sec | [5] |
| ISD1212 | | 12 | | | sec | [5] |
| \overline{RECLED} ON Delay | T_{LED1} | | 5 | | msec | |
| \overline{RECLED} OFF Delay | T_{LED2} | | | | | |
| ISD1210 | | 40 | 48.6 | 100 | msec | |
| ISD1212 | | 50 | 58.3 | 105 | msec | |
| A0-A7 Setup Time | T_{SET} | 300 | | | nsec | |
| A0-A7 Hold Time | T_{HOLD} | 0 | | | nsec | |
| Record Power-Up Delay | T_{RPUD} | | | | | |
| ISD1210 | | | 32 | | msec | |
| ISD1212 | | | 39 | | msec | |
| Record Power-Down Delay | T_{RPDD} | | | | | |
| ISD1210 | | | 32 | | msec | |
| ISD1212 | | | 39 | | msec | |
| Play Power-Up Delay | T_{PPUD} | | | | | |
| ISD1210 | | | 32 | | msec | |
| ISD1212 | | | 39 | | msec | |
| Play Power-Down Delay | T_{PPDD} | | | | | |
| ISD1210 | | | 8.1 | | msec | |
| ISD1212 | | | 9.7 | | msec | |

| CHARACTERISTICS | SYMBOLS | MIN ^[2] | TYP ^[1] | MAX ^[2] | UNITS | CONDITIONS |
|---------------------------------------|------------------|--------------------|--------------------|--------------------|--------------|-----------------------------|
| EOM Pulse Width ISD1210 ISD1212 | T _{EOM} | | 15.625 18.75 | | msec msec | |
| Total Harmonic Distortion | THD | | 1 | | % | @ 1 kHz |
| Speaker Output Power | P _{OUT} | | 12.2 | | mW | R _{EXT} = 16 Ω |
| Voltage Across Speaker Pins | V _{OUT} | | 1.25 | 2.5 | Vp-p | R _{EXT} = 600 Ω |
| MIC Input Voltage | V _{IN1} | | | 20 | mV | Peak-to-Peak ^[4] |
| ANA IN Input Voltage | V _{IN2} | | | 50 | mV | Peak-to-Peak |

- [1] Typical values @ T_A = 25° and 5.0V sample rate.
- [2] All Min/Max limits are guaranteed by Winbond via electrical testing or characterization. Not all specifications are 100 percent tested.
- [3] Low-frequency cutoff depends upon the value of external capacitors (see Pin Descriptions)
- [4] With 5.1 K Ω series resistor at ANA IN.
- [5] Sampling Frequency and playback Duration can vary as much as ±2.25 percent over the commercial temperature ranges. All devices will meet the maximum sampling frequency and minimum playback duration parameters. For greater stability, an external clock can be utilized (see Pin Descriptions)
- [6] Filter specification applies to the antialiasing filter and the smoothing filter. Typical Parameter Variation with Voltage and Temperature. This parameter is not checked during production testing and may vary due to process variations and other factors. Therefore, the customer should not rely upon this value for testing purposes.



10.1.1. Typical Parameter Variation with Voltage and Temperature





10.2. PARAMETERS FOR DIE

TABLE 10: DC PARAMETERS

| PARAMETERS | SYMBOLS | MIN ^[2] | TYP ^[1] | MAX ^[2] | UNITS | CONDITIONS |
|-------------------------------------|---------------------|--------------------|--------------------|--------------------|-------|---|
| Input Low Voltage | V _{IL} | | | 0.8 | V | |
| Input High Voltage | V _{IH} | 2.4 | | | V | |
| Output Low Voltage | V _{OL} | | | 0.4 | V | I _{OL} = 4.0 mA |
| Output High Voltage | V _{OH} | 2.4 | | | V | I _{OH} = -1.6 mA |
| V _{CC} Current (Operating) | I _{CC} | | 15 | 30 | mA | V _{CC} = 5.5V ^[3] , R _{EXT} = ∞ |
| V _{CC} Current (Standby) | I _{SB} | | 0.5 | 10 | μA | ^[3] ^[4] |
| Input Leakage Current | I _{IL} | | | ±1 | μA | |
| Input Current HIGH w/Pull Down | I _{ILPD} | | | 130 | μA | Force V _{CC} ^[5] |
| Output Load Impedance | R _{EXT} | 16 | | | Ω | Speaker Load |
| Preamp IN Input Resistance | R _{MIC} | | 10 | | KΩ | Pads 17,18 |
| ANA IN Input Resistance | R _{ANA IN} | | 3 | | KΩ | |
| Preamp Gain 1 | A _{PRE1} | | 24 | | dB | AGC = 0.0V |
| Preamp Gain 2 | A _{PRE2} | | -45 | -15 | dB | AGC = 2.5V |
| ANA IN to SP+/- Gain | A _{ARP} | | 22 | | dB | |
| AGC Output Resistance | R _{AGC} | | 5 | | KΩ | |
| Preamp Out Source | I _{PREH} | | -2 | | mA | @ V _{OUT} = 1.0V |
| Preamp In Sink | I _{PREL} | | 0.5 | | mA | @ V _{OUT} = 2.0V |

[1] Typical values @ T_A = 25° and 5.0V.

[2] All Min/Max limits are guaranteed by Winbond via electrical testing or characterization. Not all specifications are 100 percent tested.

[3] V_{CCA} and V_{CCD} connected together.

[4] REC, PLAYL, and PLAYE must be at V_{CCD}.

[5] Pin 26.

TABLE 11: AC PARAMETERS

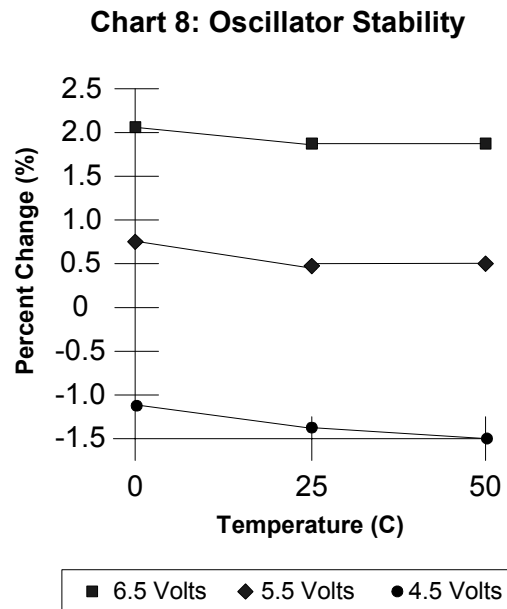
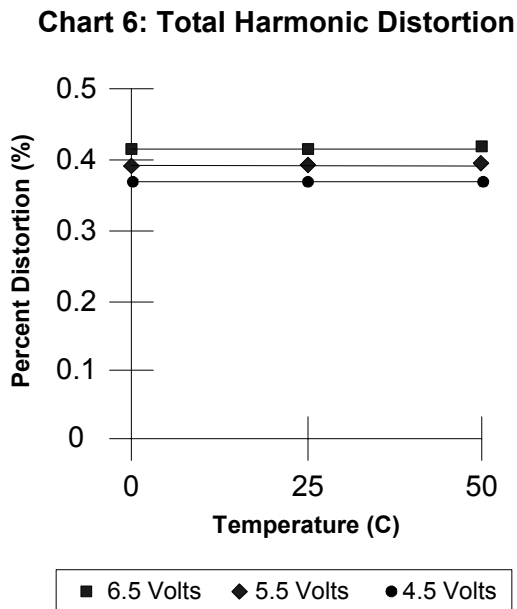
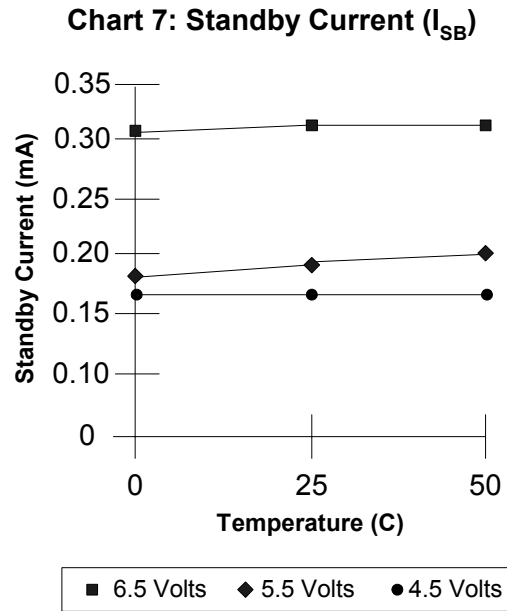
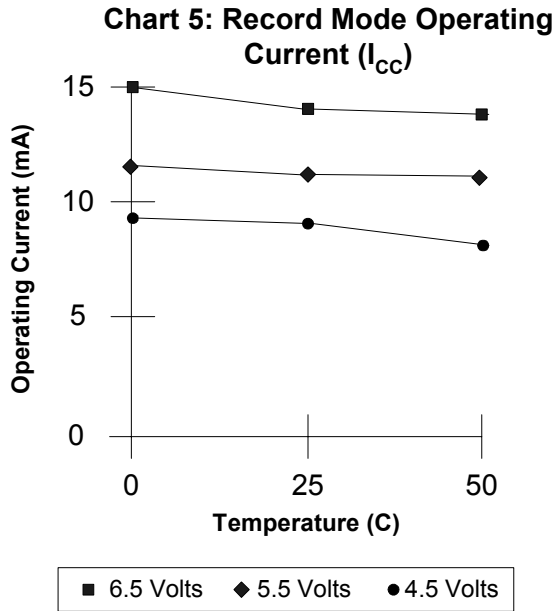
| CHARACTERISTICS | SYMBOLS | MIN ^[2] | TYP ^[1] | MAX ^[2] | UNITS | CONDITIONS |
|--------------------------------------|------------|--------------------|--------------------|--------------------|-------|---------------------------------------|
| Sampling Frequency | F_S | | | | | |
| ISD1210 | | | | 6.4 | kHz | [5] |
| ISD1212 | | | | 5.3 | kHz | [5] |
| Filter Pass Band | F_{CF} | | | | | |
| ISD1210 | | | 2.6 | | kHz | 3 dB Roll-Off Point ^{[3][6]} |
| ISD1212 | | | 2.2 | | kHz | 3 dB Roll-Off Point ^{[3][6]} |
| Record Duration | T_{REC} | | | | | |
| ISD1210 | | 10 | | | sec | |
| ISD1212 | | 12 | | | sec | |
| Playback Duration | T_{PLAY} | | | | | |
| ISD1210 | | 10 | | | sec | [5] |
| ISD1212 | | 12 | | | sec | [5] |
| $\overline{\text{RECLED}}$ ON Delay | T_{LED1} | | 5 | | msec | |
| $\overline{\text{RECLED}}$ OFF Delay | T_{LED2} | | | | | |
| ISD1210 | | 40 | 48.5 | 100 | msec | |
| ISD1212 | | 50 | 58.3 | 105 | msec | |
| Address Setup Time | T_{SET} | 300 | | | nsec | |
| Address Hold Time | T_{HOLD} | 0 | | | nsec | |
| Power-Up Delay | T_{RPUD} | | | | | |
| ISD1210 | | | 32 | | msec | |
| ISD1212 | | | 39 | | msec | |
| PD Pulse Width (Record) | T_{RPDD} | | | | | |
| ISD1210 | | | 32 | | msec | |
| ISD1212 | | | 39 | | msec | |
| Play Power-Up Delay | T_{PPUD} | | | | | |
| ISD1210 | | | 32 | | msec | |
| ISD1212 | | | 39 | | msec | |
| Play Power-Down Delay | T_{PPDD} | | | | | |
| ISD1210 | | | 8.1 | | msec | |
| ISD1212 | | | 9.7 | | msec | |

| CHARACTERISTICS | SYMBOLS | MIN ^[2] | TYP ^[1] | MAX ^[2] | UNITS | CONDITIONS |
|---------------------------------------|------------------|--------------------|--------------------|--------------------|--------------|--|
| EOM Pulse Width ISD1210 ISD1212 | T _{EOM} | | 16.625 18.75 | | msec msec | |
| Total Harmonic Distortion | THD | | 1 | | % | @ 1 kHz |
| Speaker Output Power | P _{OUT} | | 12.2 | | mW | R _{EXT} = 16 Ω ^[4] |
| Voltage Across Speaker Pins | V _{OUT} | | 1.25 | 2.5 | Vp-p | R _{EXT} = 600 Ω |
| MIC Input Voltage | V _{IN1} | | | 20 | mV | Peak-to-Peak ^[4] |
| ANA IN Input Voltage | V _{IN2} | | | 50 | mV | Peak-to-Peak |

- [1] Typical values @ T_A = 25° and 5.0V sample rate.
- [2] All Min/Max limits are guaranteed by Winbond via electrical testing or characterization. Not all specifications are 100 percent tested.
- [3] Low-frequency cutoff depends upon the value of external capacitors (see Pin Descriptions)
- [4] With 5.1 K Ω series resistor at ANA IN.
- [5] Sampling Frequency and playback Duration can vary as much as ±2.25 percent over the commercial temperature range. All devices will meet the maximum sampling frequency and minimum playback duration parameters. For greater stability, an external clock can be utilized (see Pin Descriptions)
- [6] Filter specification applies to the antialiasing filter and the smoothing filter. Typical Parameter Variation with Voltage and Temperature. This parameter is not checked during production testing and may vary due to process variations and other factors. Therefore, the customer should not rely upon this value for testing purposes.



10.2.1. Typical Parameter Variation with Voltage and Temperature



ISD1200 SERIES



11. TYPICAL APPLICATION CIRCUIT

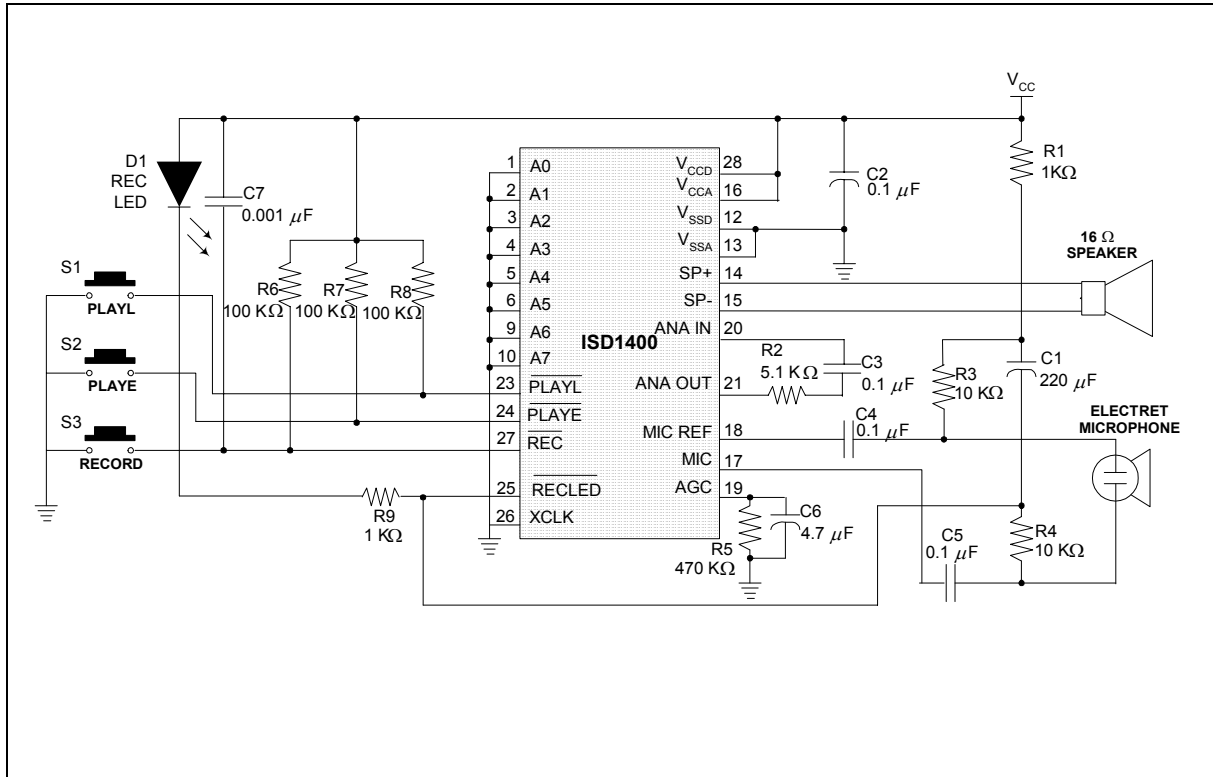


FIGURE 5: APPLICATION EXAMPLE



Functional Description Example

The following example operating sequence demonstrates the functionality of the ISD1200 series devices.

1. Record a message:

Pulling the $\overline{\text{REC}}$ signal LOW initiates a record cycle from current location. When $\overline{\text{REC}}$ is held LOW, the recording continues. Until the memory array is filled up or when $\overline{\text{REC}}$ is pulled HIGH, recording ceases. An EOM marker is written at the end of message. Then the device will automatically power down.

2. Edge-activated playback:

Pulling the $\overline{\text{PLAYE}}$ signal LOW initiates a playback cycle from the beginning of the message until the entire message is played. The rising edge of $\overline{\text{PLAYE}}$ has no effect on operation. When the EOM marker is encountered, the device automatically powers down. A subsequent falling edge on $\overline{\text{PLAYE}}$ initiates a new playback operation from the beginning of the message.

3. Level-activated playback:

Holding the $\overline{\text{PLAYL}}$ signal LOW initiates a playback cycle from the beginning of the message, until $\overline{\text{PLAYL}}$ is pulled HIGH or when the EOM marker is encountered, playback operation stops and the device automatically powers down.

4. Record (interrupting playback).

The $\overline{\text{REC}}$ signal takes precedence over playback operation. Holding $\overline{\text{REC}}$ LOW initiates a new record operation from current location, regardless of any current operation in progress.

5. $\overline{\text{RECLED}}$ operation.

During record, the $\overline{\text{RECLED}}$ output pin provides an active-LOW signal, which can be used to drive an LED as a "record-in-progress" indicator. It returns to a HIGH state when the $\overline{\text{REC}}$ pin is pulled HIGH or when the recording is completed due to the memory being filled. However, during playback, this pin also pulses LOW to indicate an EOM at the end of a message.



Applications Note

Some users may experience an unexpected recording taking place when their circuit is powered up, or the batteries are changed and V_{CC} rises faster than \overline{REC} . This undesired recording prevents playback of the previously recorded message. A spurious EOM marker appears at the very beginning of the memory, preventing access to the original message, and nothing is played.

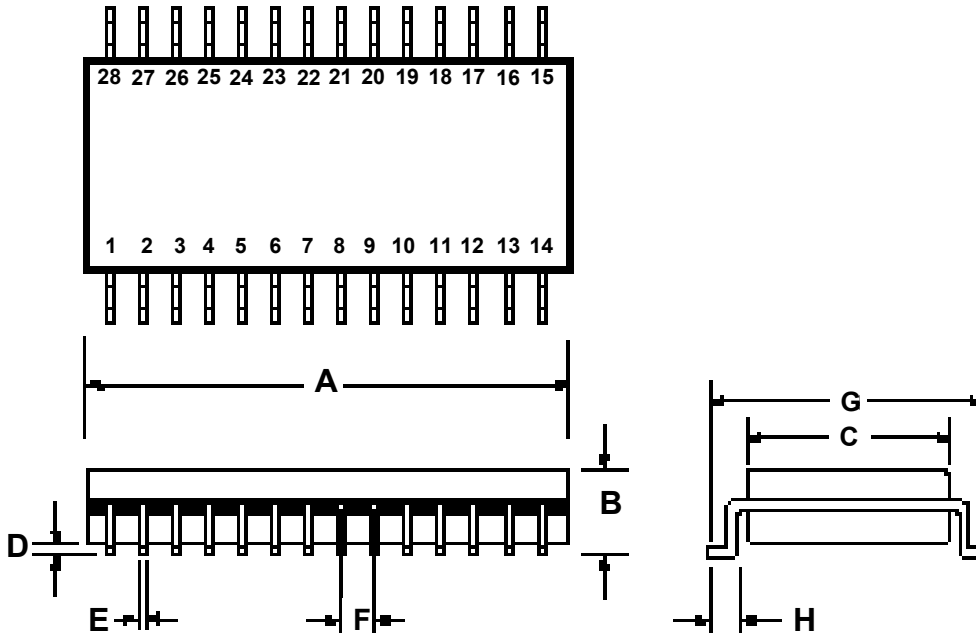
To prevent this occurrence, place a capacitor (approx. 0.001 μF) between the control pin, \overline{REC} , and V_{CC} . This pulls the control pin voltage up with V_{CC} as it rises. Once the voltage is HIGH, the pull-up device will keep the pin HIGH until intentionally pulled LOW, preventing the false EOM marker.

Since this anomaly depends on factors such as the capacitance of the user's printed circuit board, not all circuit designs will exhibit the spurious marker. However, it is recommended, that the capacitor is included for design reliability. A more detailed explanation and resolution of this occurrence is described in Application Information.



12. PACKAGE DRAWING AND DIMENSIONS

12.1. 28-LEAD 300MIL PLASTIC SMALL OUTLINE IC (SOIC)



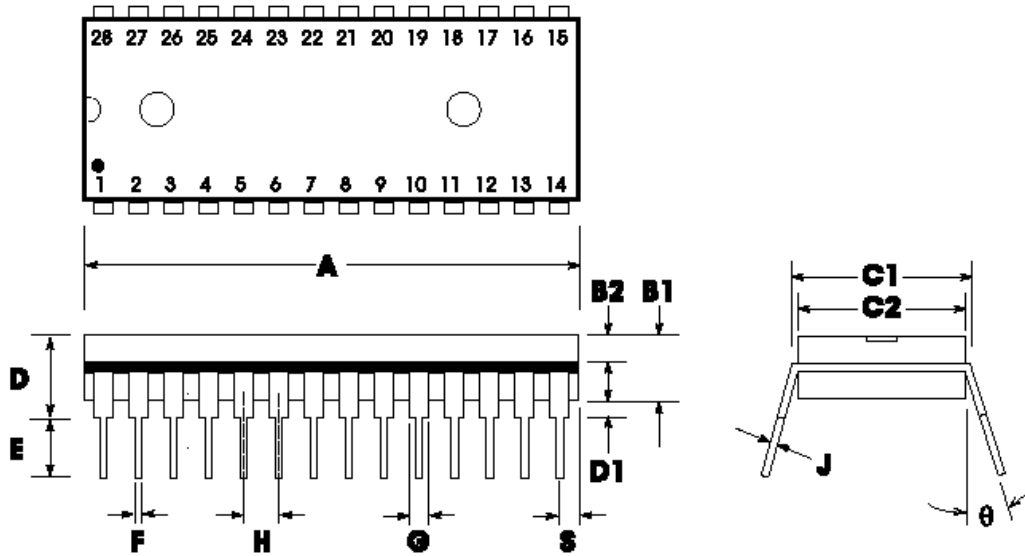
| | INCHES | | | MILLIMETERS | | |
|---|--------|-------|--------|-------------|-------|-------|
| | Min | Nom | Max | Min | Nom | Max |
| A | 0.701 | 0.706 | 0.711 | 17.81 | 17.93 | 18.06 |
| B | 0.097 | 0.101 | 0.104 | 2.46 | 2.56 | 2.64 |
| C | 0.292 | 0.296 | 0.299 | 7.42 | 7.52 | 7.59 |
| D | 0.005 | 0.009 | 0.0115 | 0.127 | 0.22 | 0.29 |
| E | 0.014 | 0.016 | 0.019 | 0.35 | 0.41 | 0.48 |
| F | | 0.050 | | | 1.27 | |
| G | 0.400 | 0.406 | 0.410 | 10.16 | 10.31 | 10.41 |
| H | 0.024 | 0.032 | 0.040 | 0.61 | 0.81 | 1.02 |

Note: Lead coplanarity to be within 0.004 inches.

ISD1200 SERIES



12.2. 28-LEAD 600MIL PLASTIC DUAL INLINE PACKAGE (PDIP)



| | INCHES | | | MILLIMETERS | | |
|----|--------|-------|-------|-------------|-------|-------|
| | Min | Nom | Max | Min | Nom | Max |
| A | 1.445 | 1.450 | 1.455 | 36.70 | 36.83 | 36.96 |
| B1 | | 0.150 | | | 3.81 | |
| B2 | 0.065 | 0.070 | 0.075 | 1.65 | 1.78 | 1.91 |
| C1 | 0.600 | | 0.625 | 15.24 | | 15.88 |
| C2 | 0.530 | 0.540 | 0.550 | 13.46 | 13.72 | 13.97 |
| D | | | 0.19 | | | 4.83 |
| D1 | 0.015 | | | 0.38 | | |
| E | 0.125 | | 0.135 | 3.18 | | 3.43 |
| F | 0.015 | 0.018 | 0.022 | 0.38 | 0.46 | 0.56 |
| G | 0.055 | 0.060 | 0.065 | 1.40 | 1.52 | 1.62 |
| H | | 0.100 | | | 2.54 | |
| J | 0.008 | 0.010 | 0.012 | 0.20 | 0.25 | 0.30 |
| S | 0.070 | 0.075 | 0.080 | 1.78 | 1.91 | 2.03 |
| q | 0° | | 15° | 0° | | 15° |

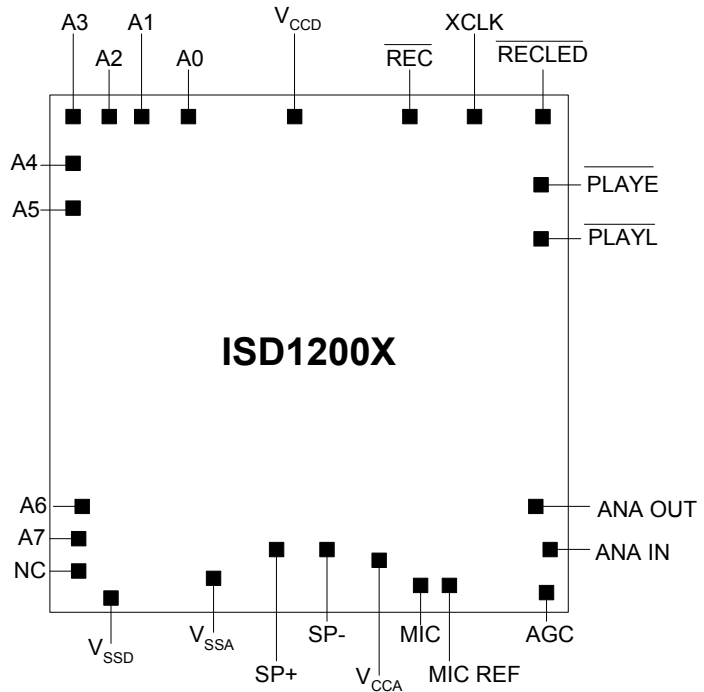
ISD1200 SERIES



12.3. DIE PHYSICAL LAYOUT^[1]

ISD1200x

- Die Dimensions
 - X: 172.2 ± 1 mils
 - Y: 138.2 ± 1 mils
- Die Thickness^[2]
 - $17.5 \pm .1$ mils
- Pad Opening
 - 88 x 112 microns
 - 3.46 x 4.41 mils



Notes:

- [1] The backside of die is internally connected to V_{SS} . It **MUST NOT** be connected to any other potential or damage may occur.
- [2] Die thickness is subject to change, please contact Winbond factory for status.

ISD1200 SERIES PAD DESIGNATIONS, (with respect to die center)

| PAD | PAD Name | X Axis (μm) | Y Axis (μm) |
|------------------|--------------------------|--------------------------|--------------------------|
| A0 | Address 0 | -1364.0 | 1589.6 |
| A1 | Address 1 | -1648.4 | 1589.6 |
| A2 | Address 2 | -1816.4 | 1589.6 |
| A3 | Address 3 | -2013.6 | 1515.6 |
| A4 | Address 4 | -2013.6 | 1337.6 |
| A5 | Address 5 | -2013.6 | 1129.6 |
| A6 | Address 6 | -2013.6 | -831.2 |
| A7 | Address 7 | -2013.6 | -1022.0 |
| NC | No Connect | -2013.6 | -1361.6 |
| V _{SSD} | Digital Ground | -1893.6 | -1588.0 |
| V _{SSA} | Analog Ground | -357.6 | -1588.0 |
| SP+ | Speaker Output + | -17.2 | -1512.8 |
| SP- | Speaker Output - | 412.4 | -1512.8 |
| V _{CCA} | Analog Power Supply | 780.0 | -1552.4 |
| MIC | Microphone Input | 992.0 | -1590.0 |
| MIC REF | Microphone Reference | 1169.2 | -1590.0 |
| AGC | Automatic Gain Control | 1978.4 | -1590.0 |
| ANA IN | Analog Input | 2005.6 | -1196.4 |
| ANA OUT | Analog Output | 1991.2 | -995.2 |
| PLAYL | Level-Activated Playback | 2014.4 | 1224.4 |
| PLAYE | Edge-Activated Playback | 2014.4 | 1392.8 |
| RECLED | Record LED Output | 2012.4 | 1587.6 |
| XCLK | External Clock | 1581.2 | 1589.6 |
| REC | Record | 752.8 | 1589.6 |
| V _{CCD} | Digital Power Supply | -48.0 | 1545.2 |

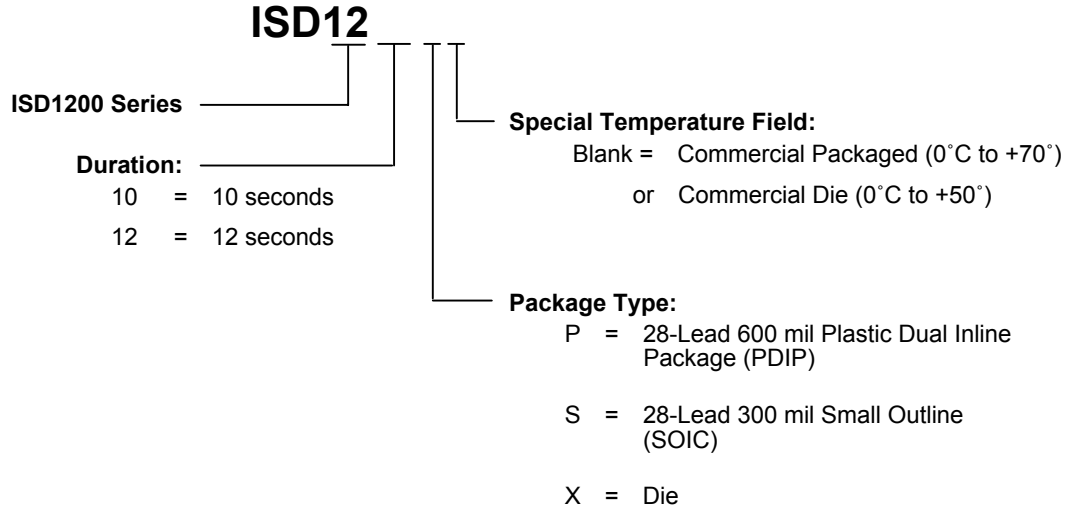
Note: Die dimensions and pad positions may be subject to change. Please contact Winbond Sales Office or Representatives to verify current specifications.

ISD1200 SERIES



13. ORDERING INFORMATION

Product Number Descriptor Key



When ordering ISD1200 series devices, please refer to the following valid part numbers.

| Die / Package | 10-Second | | 12-Second | |
|---------------|-------------|--------------|-------------|--------------|
| | Product P/N | Ordering P/N | Product P/N | Ordering P/N |
| Die | ISD1210X | I1210X | ISD1212X | I1212X |
| PDIP | ISD1210P | I1210P | ISD1212P | I1212P |
| SOIC | ISD1210S | I1210S | ISD1212S | I1212S |

For the latest product information, access Winbond's worldwide website at <http://www.winbond-usa.com>



14. VERSION HISTORY

| VERSION | DATE | DESCRIPTION |
|---------|-------------|--|
| 0 | Before 2004 | Initial issue |
| 1.0 | March 2004 | Reformat the document. Add footnote to Filter Passband in Tables 1, 9 & 11. Revise Functional Description Example section. Revise die info. Revise ordering information. |

ISD1200 SERIES



The contents of this document are provided only as a guide for the applications of Winbond products. Winbond makes no representation or warranties with respect to the accuracy or completeness of the contents of this publication and reserves the right to discontinue or make changes to specifications and product descriptions at any time without notice. No license, whether express or implied, to any intellectual property or other right of Winbond or others is granted by this publication. Except as set forth in Winbond's Standard Terms and Conditions of Sale, Winbond assumes no liability whatsoever and disclaims any express or implied warranty of merchantability, fitness for a particular purpose or infringement of any Intellectual property.

Winbond products are not designed, intended, authorized or warranted for use as components in systems or equipments intended for surgical implantation, atomic energy control instruments, airplane or spaceship instruments, transportation instruments, traffic signal instruments, combustion control instruments, or for other applications intended to support or sustain life. Further more, Winbond products are not intended for applications wherein failure of Winbond products could result or lead to a situation wherein personal injury, death or severe property or environmental injury could occur.

Application examples and alternative uses of any integrated circuit contained in this publication are for illustration only and Winbond makes no representation or warranty that such applications shall be suitable for the use specified.

ISD® and ChipCorder® are trademarks of Winbond Electronics Corporation. SuperFlash® is the trademark of Silicon Storage Technology, Inc.

The 100-year retention and 100K record cycle projections are based upon accelerated reliability tests, as published in the Winbond Reliability Report, and are neither warranted nor guaranteed by Winbond.

Information contained in this ISD® ChipCorder® data sheet supersedes all data for the ISD ChipCorder products published by ISD® prior to August, 1998.

This data sheet and any future addendum to this data sheet is(are) the complete and controlling ISD® ChipCorder® product specifications. In the event any inconsistencies exist between the information in this and other product documentation, or in the event that other product documentation contains information in addition to the information in this, the information contained herein supersedes and governs such other information in its entirety.

Copyright© 2003, Winbond Electronics Corporation. All rights reserved. ISD® is a registered trademark of Winbond. ChipCorder® is a trademark of Winbond. All other trademarks are properties of their respective owners.



Headquarters

No. 4, Creation Rd. III
Science-Based Industrial Park,
Hsinchu, Taiwan
TEL: 886-3-5770066
FAX: 886-3-5665577
<http://www.winbond.com.tw/>

Winbond Electronics Corporation America

2727 North First Street, San Jose,
CA 95134, U.S.A.
TEL: 1-408-9436666
FAX: 1-408-5441797
<http://www.winbond-usa.com/>

Winbond Electronics (Shanghai) Ltd.

27F, 299 Yan An W. Rd. Shanghai,
200336 China
TEL: 86-21-62365999
FAX: 86-21-62356998

Taipei Office

9F, No. 480, Pueiguang Rd.
Neihu District
Taipei, 114 Taiwan
TEL: 886-2-81777168
FAX: 886-2-87153579

Winbond Electronics Corporation Japan

7F Daini-ueno BLDG. 3-7-18
Shinyokohama Kohokuku,
Yokohama, 222-0033
TEL: 81-45-4781881
FAX: 81-45-4781800

Winbond Electronics (H.K.) Ltd.

Unit 9-15, 22F, Millennium City,
No. 378 Kwun Tong Rd.,
Kowloon, Hong Kong
TEL: 852-27513100
FAX: 852-27552064

Please note that all data and specifications are subject to change without notice.
All the trademarks of products and companies mentioned in this datasheet belong to their respective owners.
This product incorporates SuperFlash® technology licensed From SST.

Publication Release Date: March 2004

Revision 1.0